

## HKT Managed Private Cloud

# MAKE SURE YOUR BUSINESS IS ALWAYS ON



*HKT Managed Private Cloud*

### Tailor-Made and Managed System With Dedicated Resources From HKT

HKT Managed Private Cloud is a customized total cloud solution with a dedicated and secure infrastructure that address your specific business needs with all-round managed services to begin your journey of digital transformation.



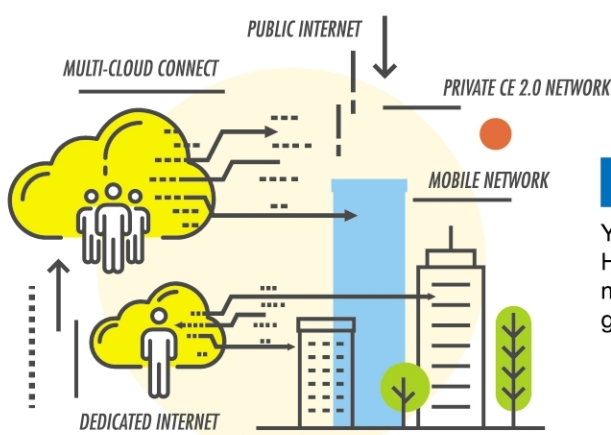


## ONE-STOP MANAGED SERVICES

Digitally transform your business with a totally customized solution, from hardware and software to business applications with premium SLA. Our local technical experts will manage your entire system so you can shift your resource costs from CAPEX to a more flexible OPEX model that frees up your cash flow.

## SECURE DEDICATED RESOURCES

Your data will be totally secure, and in full compliance with all of today's increasingly rigid compliance and audit requirements. Our cloud infrastructures are hosted at ISO-certified local data centers with 24x7 proactive monitoring.



## TOTAL FLEXIBILITY

You can connect your Managed Private Cloud in various ways with HKT's superior connectivity, that enable you to adopt a flexible multi-cloud strategy. Managed Private Cloud is highly scalable to give you greater agility in today's ever-changing business environment.

## PROVEN AND COMPREHENSIVE SUPPORT

You can enjoy professional support from our technical experts with experience across different industries, plus a wide range of diverse cloud solutions through our numerous partners. With our Managed Private Cloud, you get ensured uptime and availability, and carefree hosting of critical applications.



## YOUR TRUSTED CLOUD PARTNER

We assist you at every stage of your cloud journey with continuous support throughout your planning, implementation and optimization.

*For more information, call your account manager,  
email [info\\_enterprisecloud@pccw.com](mailto:info_enterprisecloud@pccw.com) or visit [www.hkt-cloud.com/ec](http://www.hkt-cloud.com/ec)*



HKT Enterprise Solutions